



Daws Lane, Mill Hill, NW7

£395,000

Ground floor lock-up shop with E use that would be suitable for a variety of uses, subject to the necessary consent. The premises was previously occupied for use as an office and is arranged mainly as open plan with kitchen, WC and additional office to the rear. There is a pay and display car-park approximately 50m away which we are informed is currently unmanned.

Areas:

Total area 872 sq ft (81 sq m)

Terms:

Available on a new full repairing and insuring lease for a term to be agreed at £25,000 pa or the virtual freehold is available for sale with 980 years remaining at £395,000.

Viewing

Please contact our Mill Hill Office on 02089590011 if you wish to arrange a viewing appointment for this property or require further information.

- GROUND FLOOR LOCK-UP SHOP
- OPEN PLAN KICTHEN
- 872 SQ FT
- ADDITIONAL OFFICE IN REAR
- MODERN WC
- OPPOSITE MILL HILL PARK
- WALKING DISTANCE TO MILL HILL BROADWAY



null



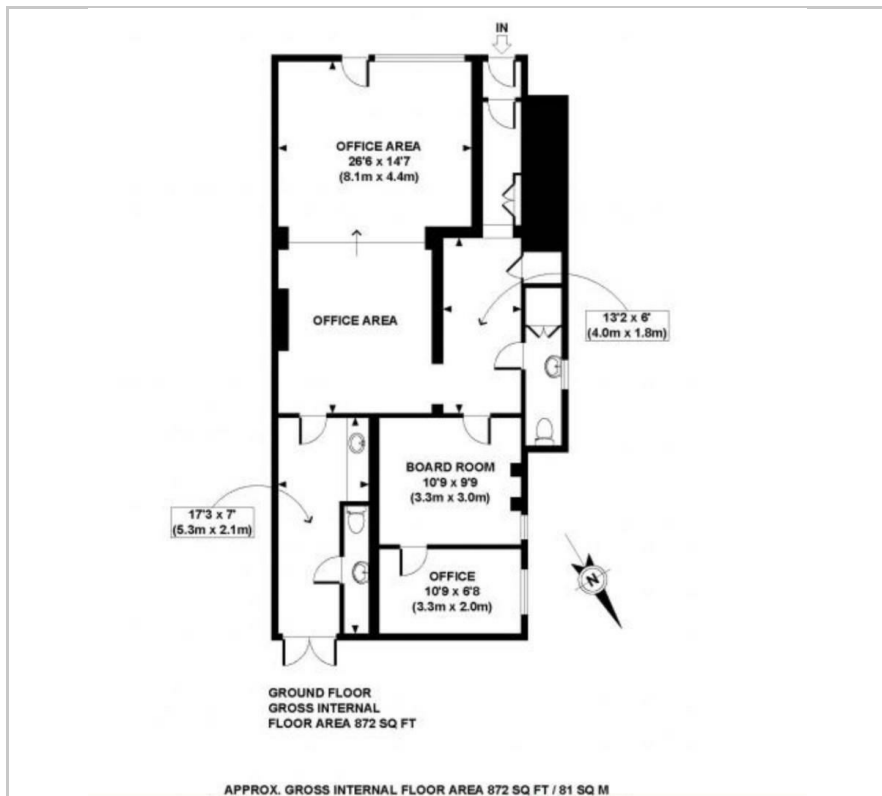
null



null



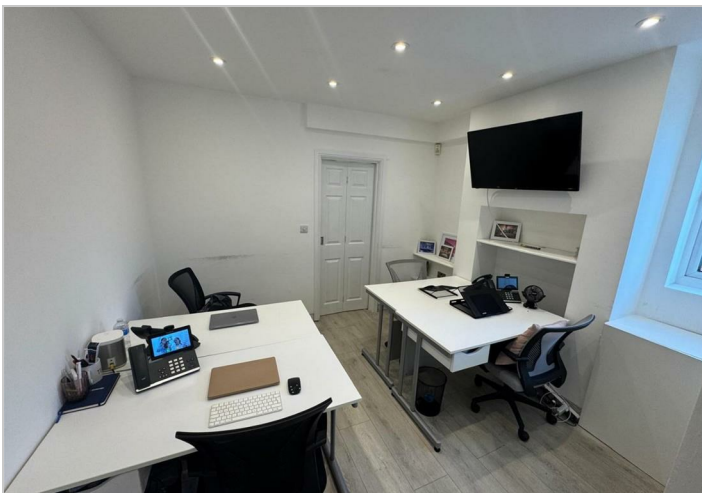
Floor Plan



Area Map



Energy Efficiency Graph



These particulars, whilst believed to be accurate are set out as a general outline only for guidance and do not constitute any part of an offer or contract. Intending purchasers should not rely on them as statements of representation of fact, but must satisfy themselves by inspection or otherwise as to their accuracy. No person in this firm's employment has the authority to make or give any representation or warranty in respect of the property.